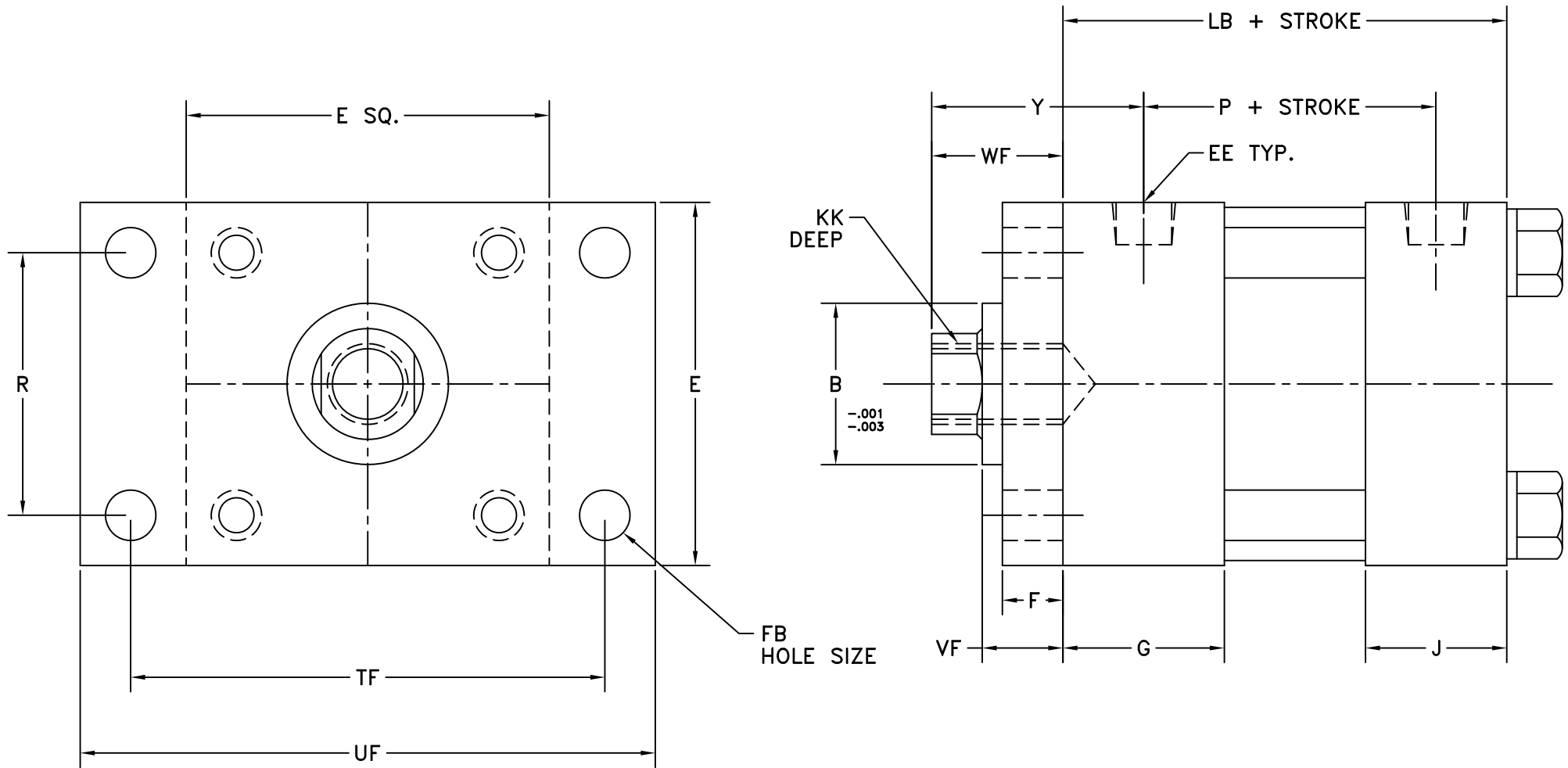


# MF1 MOUNT-STYLE "F"-FEMALE ROD END



OPEN TOLERANCE NOTES:  
 FRACTIONAL DIMS.  $\pm 1/32$   
 2 PLACE DECIMALS  $\pm .010$   
 3 PLACE DECIMALS  $\pm .005$   
 ANGLES  $\pm 30$  MINUTES  
 UNLESS SPECIFIED

BREAK SHARP EDGES  
 REMOVE ALL BURRS  
 .015 R ALL CORNERS  
 UNLESS NOTED.

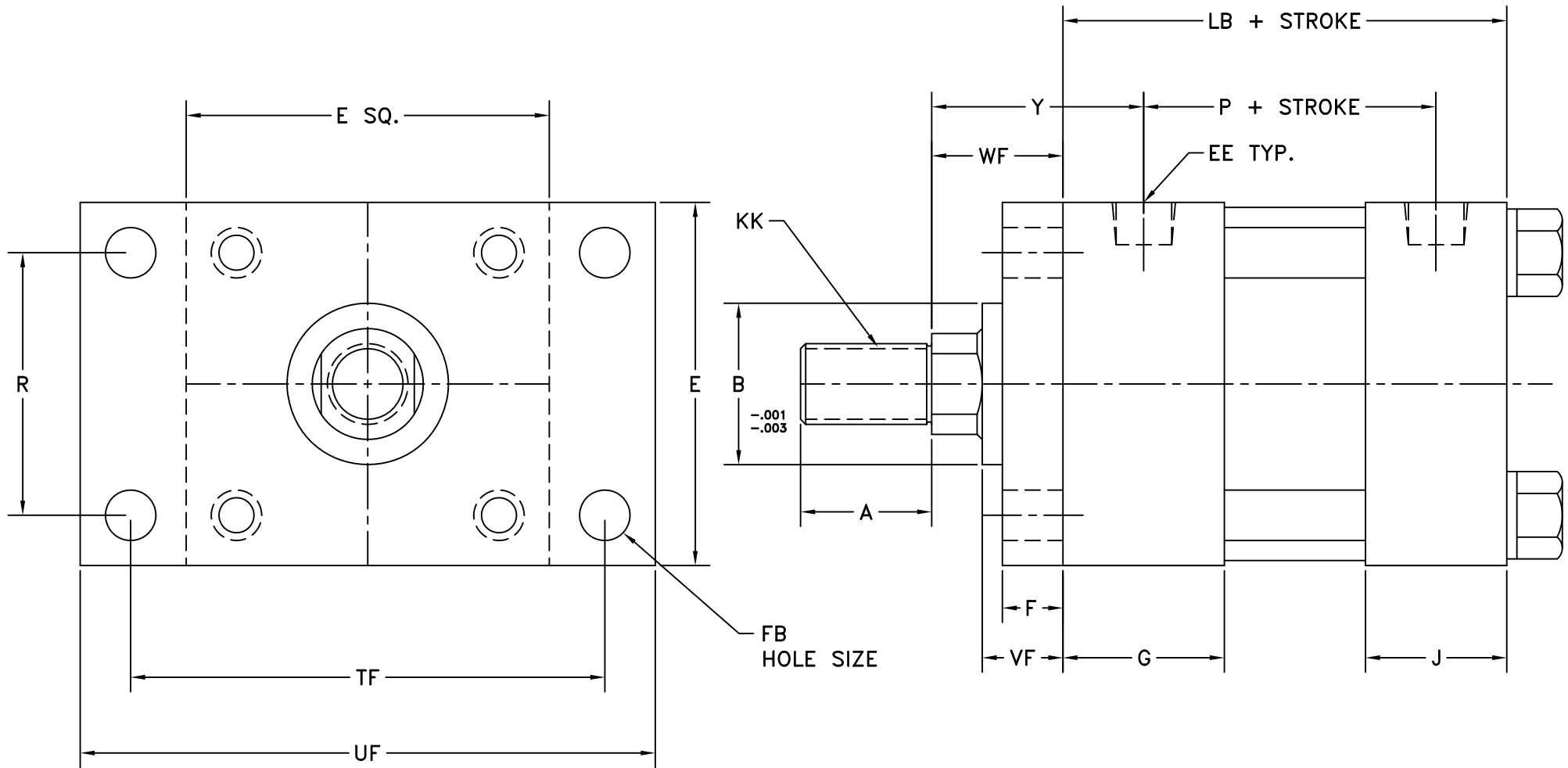
**YATES**  
*Drum*

PHONE: (586) 778-7880  
 FAX: (586) 778-6565

THIS PRINT IS THE PROPERTY OF YATES IND. INC. AND IS LOANED SUBJECT TO RETURN UPON DEMAND. ITS CONTENTS ARE CONFIDENTIAL AND MUST NOT BE COPIED OR SUBMITTED TO OUTSIDE PARTIES FOR USE OR EXAMINATION. ALL RIGHTS TO DESIGN OR INVENTION ARE RESERVED BY YATES IND. INC.

<b>MF1RPF</b>			
SIZE	APP'D.	DWG NO.	REV
C	DB 7-25-98	MF1RPF	
SCALE	NTS/FF 7-25-98		SHEET

# MF1 MOUNT-STYLE "F"-MALE ROD END



FB  
HOLE SIZE

OPEN TOLERANCE NOTES:  
 FRACTIONAL DIMS.  $\pm 1/32$   
 2 PLACE DECIMALS  $\pm .010$   
 3 PLACE DECIMALS  $\pm .005$   
 ANGLES  $\pm 30$  MINUTES  
 UNLESS SPECIFIED

BREAK SHARP EDGES  
 REMOVE ALL BURRS  
 .015 R ALL CORNERS  
 UNLESS NOTED.

**YATES**  
*Dynamic*

PHONE: (588) 778-7880  
 FAX: (588) 778-6565

THIS PRINT IS THE PROPERTY OF YATES IND. INC. AND IS LOANED SUBJECT TO RETURN UPON DEMAND. ITS CONTENTS ARE CONFIDENTIAL AND MUST NOT BE COPIED OR SUBMITTED TO OUTSIDE PARTIES FOR USE OR EXAMINATION. ALL RIGHTS TO DESIGN OR INVENTION ARE RESERVED BY YATES IND. INC.

<b>MF1RPM</b>			
SIZE	APP'D.	DWG NO.	REV
C	DB 7-25-98	MF1RPM	
SCALE	NTS/FF 7-25-98		SHEET