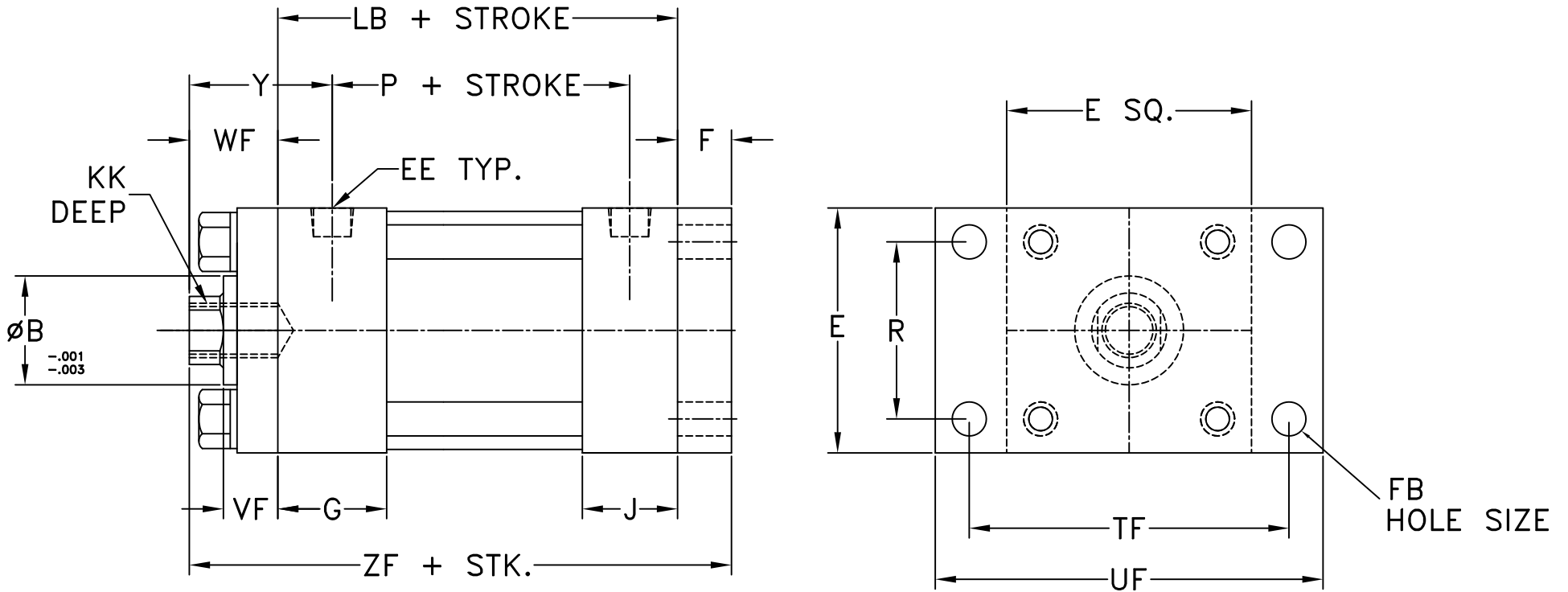


MF2 MOUNT-STYLE "R"-FEMALE ROD END



OPEN TOLERANCE NOTES:
 FRACTIONAL DIMS. $\pm 1/32$
 2 PLACE DECIMALS $\pm .010$
 3 PLACE DECIMALS $\pm .005$
 ANGLES ± 30 MINUTES
 UNLESS SPECIFIED

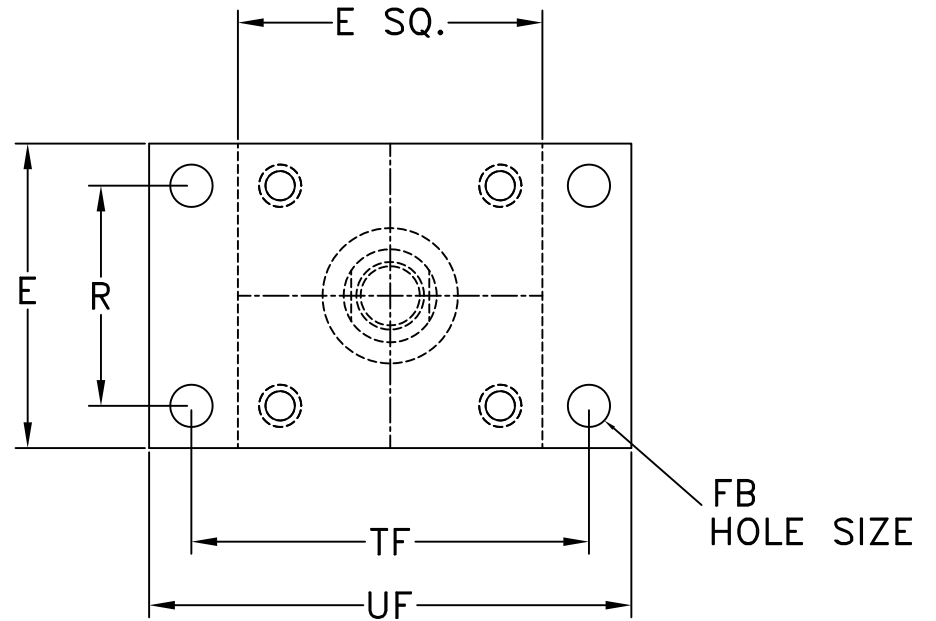
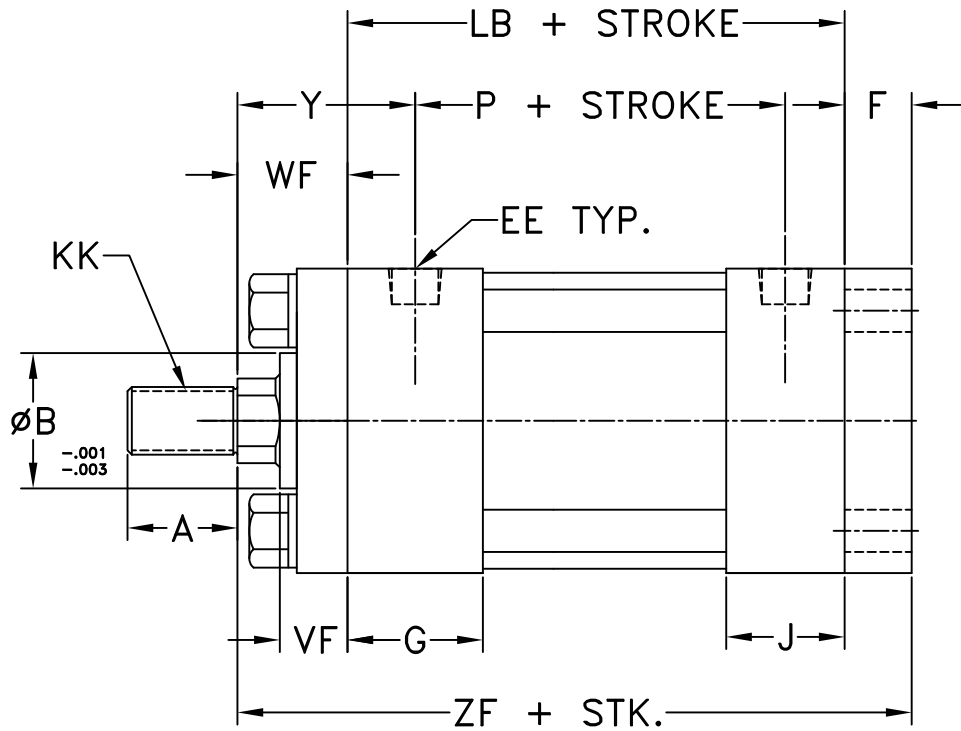
BREAK SHARP EDGES
 REMOVE ALL BURRS
 .015 R ALL CORNERS
 UNLESS NOTED.



THIS DRAWING IS THE PROPERTY OF YFE INC. AND IS LOANED TO YOU BY YFE INC. FOR YOUR USE ONLY. IT IS NOT TO BE REPRODUCED OR COPIED IN ANY MANNER WITHOUT THE WRITTEN PERMISSION OF YFE INC. ALL RIGHTS ARE RESERVED.

<p>MF2RPF</p>		<p>SIZE D</p>	<p>APPLY.</p>	<p>REV</p>
		<p>DB 7-25-98</p>	<p>MF2RPF</p>	<p>REV</p>
<p>SCALE NTS</p>		<p>FF 7-25-98</p>		<p>SHEET</p>

MF2 MOUNT-STYLE "R"-MALE ROD END



OPEN TOLERANCE NOTES:
 FRACTIONAL DIMS. $\pm 1/32$
 2 PLACE DECIMALS $\pm .010$
 3 PLACE DECIMALS $\pm .005$
 ANGLES ± 30 MINUTES
 UNLESS SPECIFIED

BREAK SHARP EDGES
 REMOVE ALL BURRS
 .015 R ALL CORNERS
 UNLESS NOTED.



<p>MF2RPM</p>		SIZE	APPLY.	QTY NO.	REV
		D	DB 7-25-98	MF2RPM	
SCALE		NTS		FF 7-25-98	SHEET