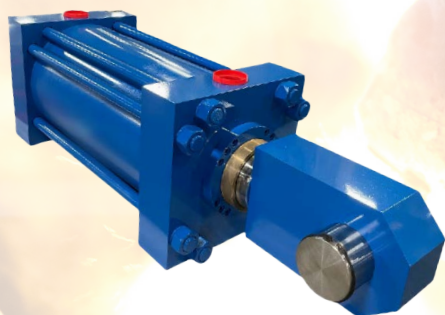
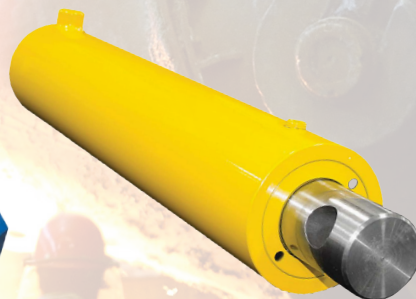


Your Cylinder Source[®]

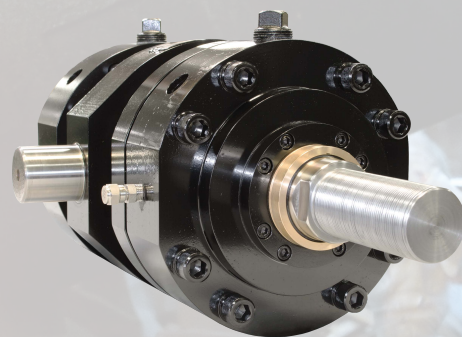
**TIE ROD
CYLINDERS**



**WELDED
CYLINDERS**



**MILL DUTY
CYLINDERS**

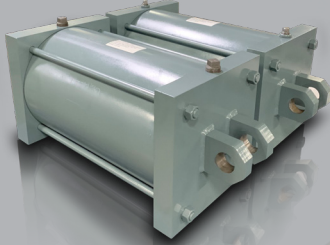


Please visit:
yatesind.com



After hours, call:
1.800.340.6024

Your Cylinder Source®



YATES INDUSTRIES IS A MEMBER
OF THE NATIONAL FLUID POWER
ASSOCIATION

Yates Industries, Inc.
23050 E. Industrial Dr.
St. Clair Shores, MI 48080
ph: 586.778.7680
sales@yatesind.com

Yates Cylinders Alabama
55 Refreshment Place
Decatur, AL 35601
ph: 256.351.8081
alsales@yatesind.com

Yates Cylinders Georgia
7750 The Bluffs
Austell, GA 30168
ph: 678.355.2240
gasales@yatesind.com

Yates Cylinders Ohio
550 Bellbrooke Ave.
Xenia, OH 45385
ph: 513.217.6777
ohsales@yatesind.com

TIE-ROD CYLINDERS

“H6” Hydraulic Heavy Duty:

- JIC-NFPA Interchangeable, pressures up to 3,000 PSI hydraulic, bore sizes available from 1.5” - 24”, 20 mounting styles.

“A4, H4, L4” Pneumatic Heavy Duty (steel): Hydraulic Medium Duty, Pneumatic Permanently Lubricated:

- JIC-NFPA interchangeable, pressures up to 250 PSI pneumatic or 1,500 PSI hydraulic, bore sizes available from 1.5” - 20”, 23 mounting styles.

“A2, H2” Pneumatic (Aluminum), Hydraulic Light Duty (Aluminum):

- JIC-NFPA interchangeable, pressures up to 250 PSI pneumatic or 400 PSI hydraulic, bore sizes available from 1.5” - 8”, 20 mounting styles.

MILL DUTY CYLINDERS

“MH” Hydraulic Heavy Duty:

- Built tough to handle almost any application, pressures up 3,000 PSI hydraulic, bore sizes available from 2” - 8”, 8 mounting styles.

“MP” Pneumatic Heavy Duty:

- Built to cover most mill duty pneumatic application, pressures up to 250 PSI pneumatic, bore sizes available from 2” - 8”, 8 mounting styles.

WELDED CYLINDERS

“WS” Hydraulic Severe Duty:

- Specifically engineered to withstand the most extreme applications, pressures up to 3,000 PSI hydraulic, bore sizes available from 4” - 12”, 9 mounting styles.

“WH” Hydraulic Heavy Duty:

- OEM, replacement cylinders, pressures up to 3,000 PSI hydraulic, bore sizes available from 1.5” - 8”, 9 mounting styles.

“WM” Hydraulic Medium Duty:

- OEM, replacement cylinders, pressures up to 2,500 PSI hydraulic, bore sizes available from 1.5” - 6”, 9 mounting styles.

“WP” Pneumatic Heavy Duty:

- Replacement cylinders, pressures up to 250 PSI pneumatic, bore sizes available from 1.5” - 6”, 9 mounting styles.

ACCESSORIES

- Rod Clevis • Rod Eye • Pivot Pins • Clevis Brackets
- Self-aligning Rod End Couplers • And much more

YATES INDUSTRIES ALSO PROVIDES:

- Bellow-style rod boots
- Air/oil intensifiers
- Cylinders with linear displacement transducers
- Cylinders with proximity switches
- Tandem cylinders
- All stainless steel cylinders
- Cylinders with special plating & painting
- Special cylinders per customer prints & specifications
- Back-to-Back Cylinders
- Cylinder Seal Kits
- Online Configurator

YATES INDUSTRIES REPAIR DEPARTMENT

- The Midwest's largest and most complete repair facility
- Repair all makes, all models, all sizes, Big Bore specialist 60"+
- In-house honing department, machining department, welding department & seal department
- Large inventory: seals, honed tubing, hardened chrome plated rod material, cast iron and cold roll bar stock
- 24-hour emergency service

